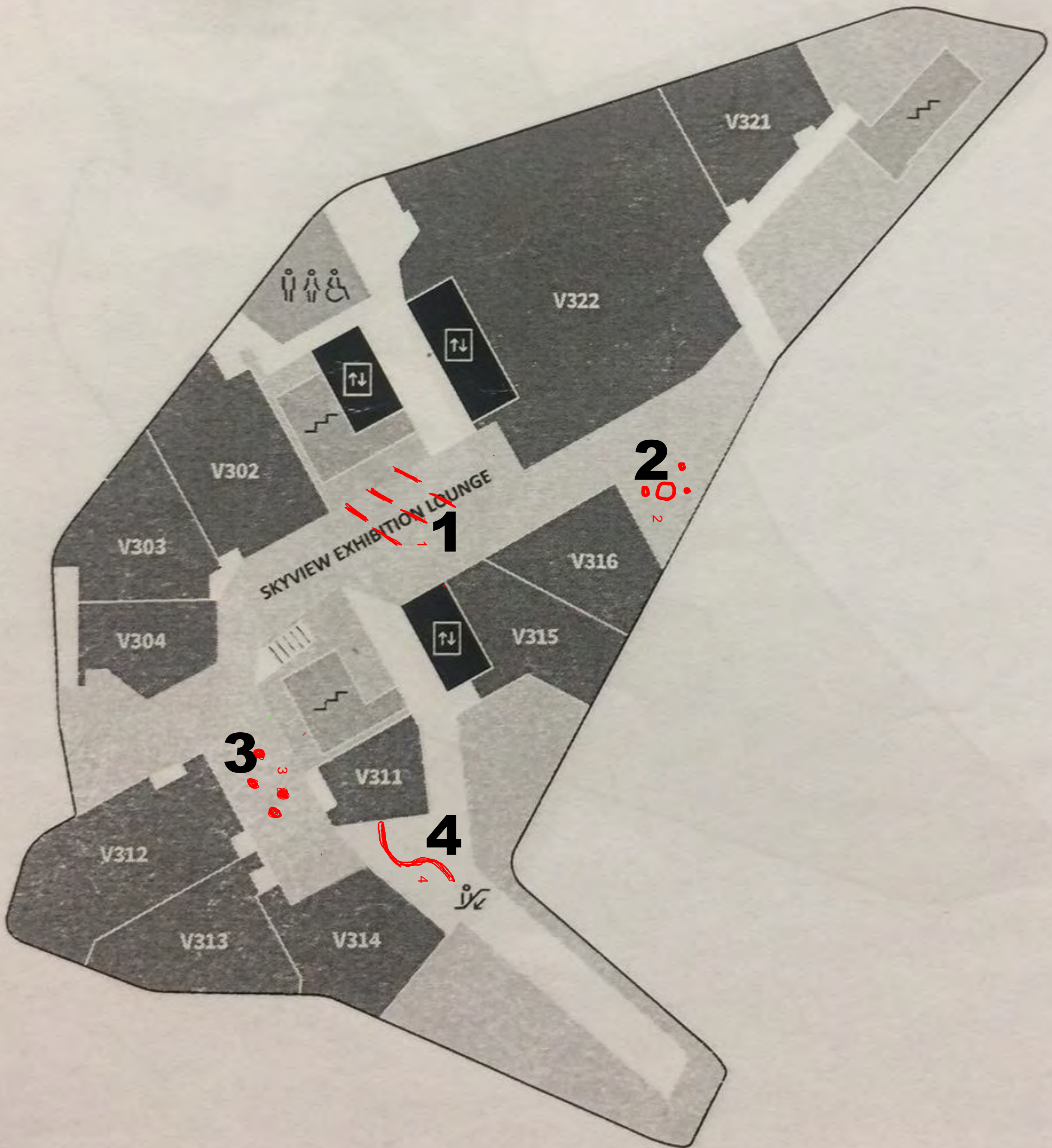


# 3



# Application Design for Approval

# 4

HK Polytechnic University, School of Design  
Master of Design (Interaction Design)  
SD5529 Embedded Interaction Workshop  
Tutor: Prof. Michael A. Fox

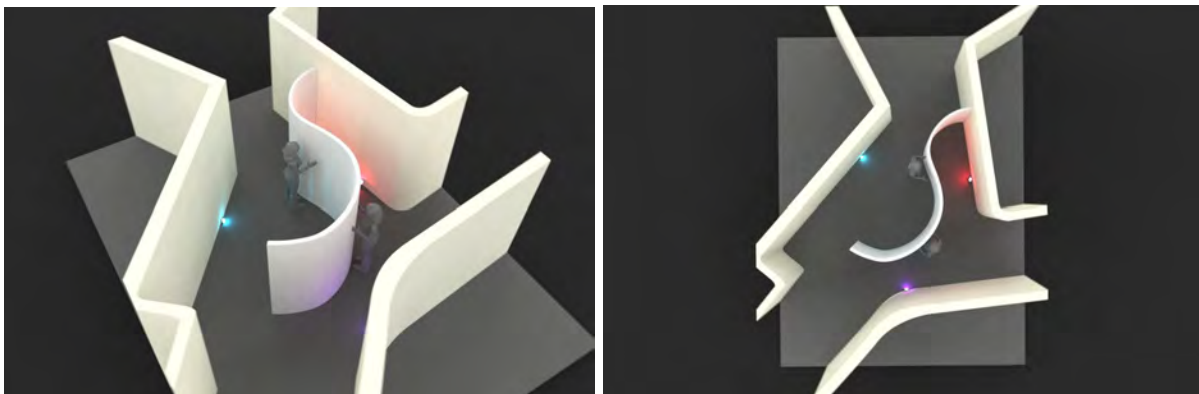
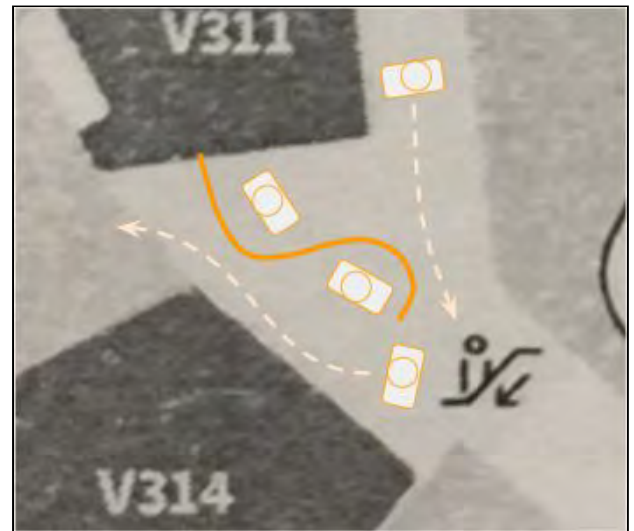
## Team 4:

18090295G CHOU Ting-yang  
18090159G GAMMELGAARD-LARSEN Anders  
18097119G AICH Anubhav  
18097064G KURNIAWATI Arianni  
18023965G YEUNG Janice  
18097027G BANERJEE Ananya

The project that is applied for approval is a temporary installation on the third floor between V311 and V314.

It consist of a fabric wall that separates the space into two areas. The wall is interactable from both sides and will change shape and generate sound accordingly.

The installation is facilitating sociopetal and sociofugal behaviour from bypassers, by physically changing the space and from the co-creation of music by people on either side of the wall.



*3D image of the project in the space*

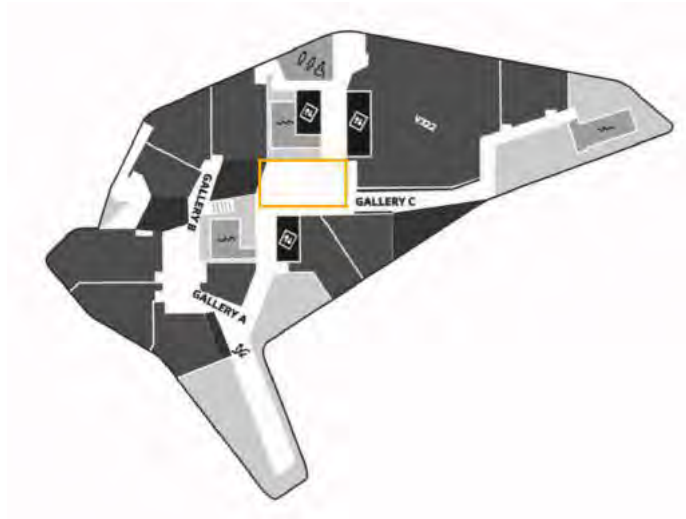
This temporary installation is a design project for MDES - SD 5529 course. It will remain up for one week from January 21-25. It will conform to all requirements of the space and will use power from the wall that will be securely taped to the floor and will not obstruct traffic flows. The materials are: fabric, wood, bamboo, PVC, stainless steel rods, rope and electronic lights.

Part 1

Description

This temporary installation is a design project for MDES- SD 5529 Course. It will remain up for one week from Jan 21 to 25. It will conform to all requirements of the space and will use power from the wall that will be securely taped to the floor and will not obstruct traffic flows or sprinklers. Nothing is screwing on the ceiling and wall permanently. The materials are cloth, iron wire, projector, Acrylic.

Location



Layout

general layout



socialfugal layout



Socialpetal layout



3D-Image



## SD5529 Embedded Interaction Workshop

# 3

### Interactive Environments Design

#### Exercise\_03-B: Application Design for Approval

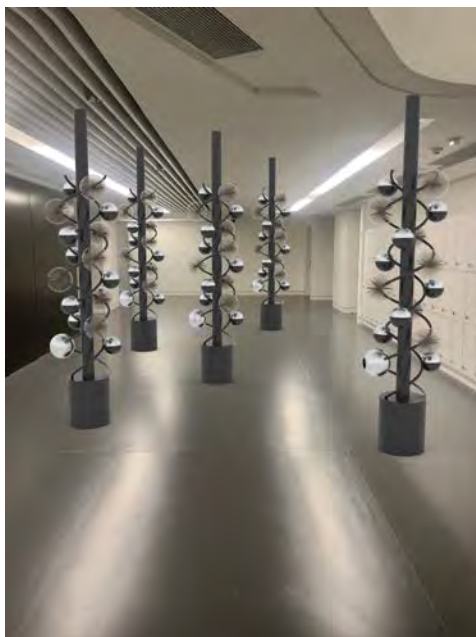
- **Text description (two sentences)**

This temporary installation is a design project for MDES - SD 5529 course. It will remain up for one week from January 21-25. It will conform to all requirements of the space and will use power from the wall that will be securely taped to the floor and will not obstruct traffic flows. The materials are: metal (aluminum), plastic, paper.

#### Plan of project in the space



#### 3-d image of project in the space



# Application Design for Approval

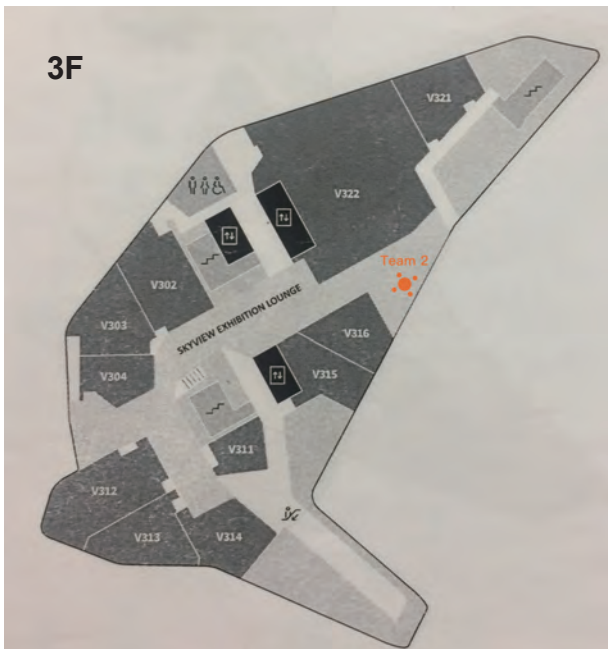
# 2

HK Polytechnic University, School of Design  
Master of Design (Interaction Design)  
SD5529 Embedded Interaction Workshop  
Tutor: Prof. Michael A. Fox

Team 2

18010165G Ho Ying LEUNG  
18095436G Esther Shihan HUANG  
18089922G Shannon Yunshan JIANG  
18090449G Eileen WANG Jianyi

## Plan of our project in the space



## Text description

This temporary installation is a design project for MDES - SD 5529 course. It will remain up for one week from January 21-25. It will conform to all requirements of the space and will use power from the wall that will be securely taped to the floor and will not obstruct traffic flows. The materials are ropes, fabric, metal or wood holder.

## 3-d image of our project

